



**CEP  
CONCEPT  
VAN**

**CEP Vehicle**  
| Iveco Daily

**Location:**  
SPIER Exhibition Stand;  
Hall 27, Stand E34



**CEP  
CONCEPT  
VAN**

Illustration may contain optional extras.  
Height variant H2 shown.

## | Vehicle Base

Vehicle Type:	Iveco Daily 35S, Box Van
Wheelbase:	4.100 mm
Permissible Gross Weight (GVW):	3.500 kg
Payload:	Designed for the maximum

## | Technical Description

### Product features:

- | Swivelling sliding door (e-cab door) replaces the standard door on the curbside (fast-running door, little space required next to the vehicle, improved passage height with modified entrance step)
- | ATV partition wall with sliding door (e-slider) as passage to load compartment (electric opening and closing)
- | Sliding door (e-slider) offset to curbside for improved ergonomics
- | Load compartment partitioning with parcel trolley and holder
- | Modified rear wall with integrated, electrically driven aluminium roller shutter (e-shutter)
- | Spring-suspended rear step
- | Optimised interior roof panelling for extended cab headroom

### Shelf System inside the Cargo Area:

- | ECO-shelf 2.0, two segments per side
- | 2 levels / 4 shelves
- | Depth of upper shelf: 420 mm
- | Depth of lower shelf: 465 mm
- | Shelf lengths maximized for optimized load volume  
→ A total of 16.3 metres of shelving space is available
- | 80 kg/m load capacity

The CEP Concept VAN from ATV forms the basis for an automated workplace for the delivery driver. The usable loading volume and the shelf area are designed to be as large as possible. Efficient delivery is supported by automated functions.

Installation is possible without special pre-equipment.





## Advantages in the variant |



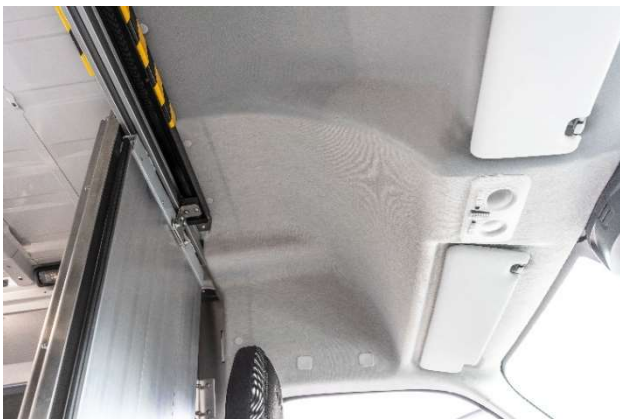
### **Aluminium roller shutter (e-shutter) at the rear**

- | Easy access via rear step, central mounting
- | Passage width of approx. 850 mm
- | Time saving due to electric opening and closing



### **ATV Shelving System**

- | Load capacity of 80 kg/m
- | Anti-slip edge provides additional load securing
- | Foldable in segments, gas-spring supported
- | Edge protection profiles and foldable grab handles guarantee work safety



### **Driver's Cab**

- | Optimised interior roof panelling for extended headroom
- | Quick-opening swing-sliding door (e-cab) mounted on curb side
- | Step design optimised for increased passage height



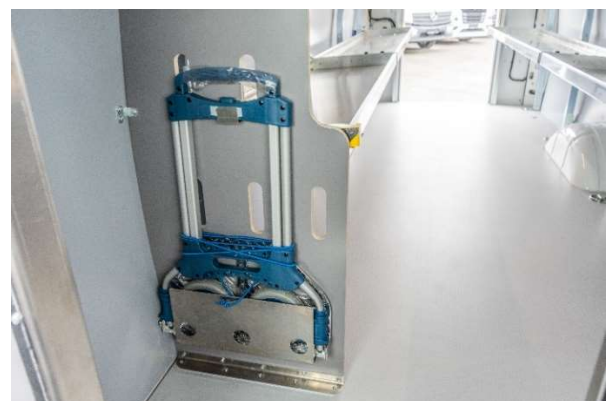
### **Spring-suspended and joint-friendly Rear Step**

- | Ergonomic
- | Optimized corrosion protection with anti-slip surface
- | Effective protection against shunting accidents at up to 6 km/h



### **ATV partition wall with e-Slider (electric sliding door)**

- | Easy access and passage to the load compartment
- | Sliding door offset to curbside facilitates getting in and out
- | Robust and lightweight aluminium construction
- | Increased shelf length due to omission of the sliding load compartment door
- | Electric opening/closing



### **Load compartment partitioning with parcel trolley**

- | Additional partition wall for load securing
- | With integrated parcel trolley holder and cut-out for increased elbow room



| Do you have any questions or would you like to request a quote?

[www.kep-ausbau.de](http://www.kep-ausbau.de)



[Request a quote now.](#)



FAHRZEUGTECHNIK

Heinrich-Spier-Str. 24 • D-32839 Steinheim

Telefon: +49 5233 945-2391

[info@atv-fahrzeugtechnik.de](mailto:info@atv-fahrzeugtechnik.de)

[www.atv-fahrzeugtechnik.de](http://www.atv-fahrzeugtechnik.de)